

KEY ADVANTAGES

- Delivers top quality performance at a fraction of the cost of ripping and replacing
- Cures rapidly under all weather conditions
- Cure time can be adjusted by adding our Hi Temp Retarder or Low Temp Accelerator
- Bonds tenaciously to concrete
- No critical mixing ratios
- No extensive surface preparation required
- Resists Oil, Gasoline, Salt, UV Radiation & Water
- Zero shrinkage



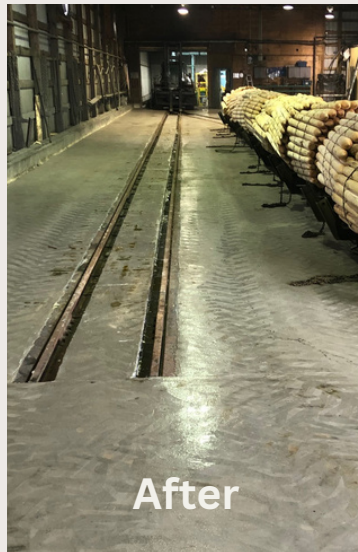
Before



After



Before



After

For over 30 years, IMCO has taken a problem solving approach to product development, working closely with our customers to develop targeted engineered products that are ideally suited to specific applications.



Contact Us

Phone

888-818-4626

Website

www.imcotechnologies.com

Address

6254 Skyway Road,
Smithville, Ontario, Canada L0R 2A0

Mail

info@imcotechnologies.com



MG-KRETE™



IMCO®

TECHNOLOGIES INC.

The Ultimate Repair
That Bonds Tenaciously
to Concrete

info@imcotechnologies.com

PRODUCT USES

MG-Krete™ is ideal for virtually an unlimited range of concrete repairs:

Ideal For Use On:

- Roadways
- Potholes
- Sidewalks
- Driveways
- Industrial floors
- Parking Decks
- Bridges
- Resloping
- Trip Hazards
- Stairs
- Parging
- Airport Runways & Aprons



MG-KRETE™



Cures to Traditional Concrete Color

Liquid / 50lb Bag = 1 Unit / .45 Cubic Ft



Before

After

Ask us about our MG-Krete™ No Odor for Interior applications

TECHNICAL & PRODUCT DATA

**NO CRITICAL MIX, NO PRIMERS NEEDED
CURES RAPIDLY IN ALL TEMPERATURES:**

AMEC TESTING RESULTS

| | |
|----------|------------|
| 45 Mins | 2610 psi |
| 24 Hours | 5149 psi |
| 7 Days | 5816 psi |
| 28 Days | 11,197 psi |

ZERO SHRINKAGE

Yield: Regular Grade

1 Unit = 0.45 Cubic Feet mixed materials

1/8" = 40 Sq. Ft.

1/4" = 20 Sq Ft.

1/2" = 10 Sq Ft.

Volume May Be Increased By Using A Clean Dry 1/2" or Less Aggragate

**** DO NOT USE LIMESTONE ****



Easy Trowel Application